

---

# Ätzmittel für ehemalige Austenitkorngrenzen »PAG QT<sup>2</sup>«

---

Prior **A**ustenite **G**rainboundaries  
Für vergütete (**QT**) un- und niedriglegierte Stähle  
16MnCr5 bis 102Cr6 und Faserverläufe

Herzogenrath, den 02.12.2024

Robert Füllmann  
Hendrik Söllner

# Prior Austenite Grainboundaries etching reagent

## PAG QT<sup>2</sup> made by Schmitz

1.7077 | 36CrB4 +Q

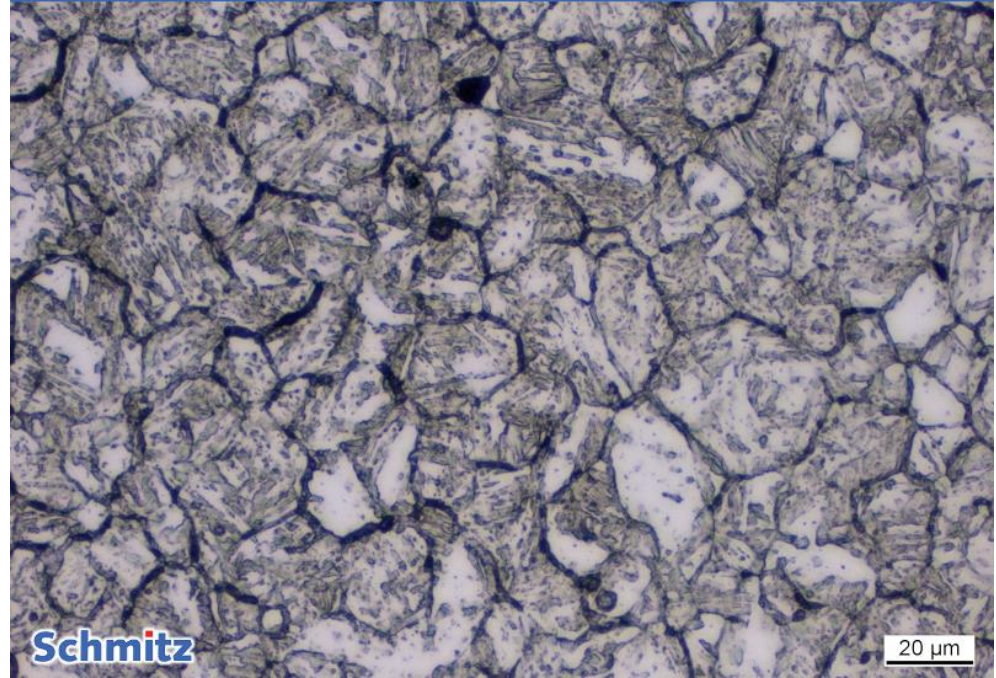
PAG QT<sup>2</sup> (c)



- 1.7077 | 36CrB4 +Q (hardened)
- Time: 3+3+15+180 min+30s OPS
- Temperature: 22 °C | 72 °F

1.7077 | 36CrB4 +QT 8.8

PAG QT<sup>2</sup> (c)



- 1.7077 | 36CrB4 +QT (8.8 screw)
- Time: 3+3+15+180 min+30s OPS
- Temperature: 22 °C | 72°F

Quelle:

© Schmitz-Metallographie GmbH

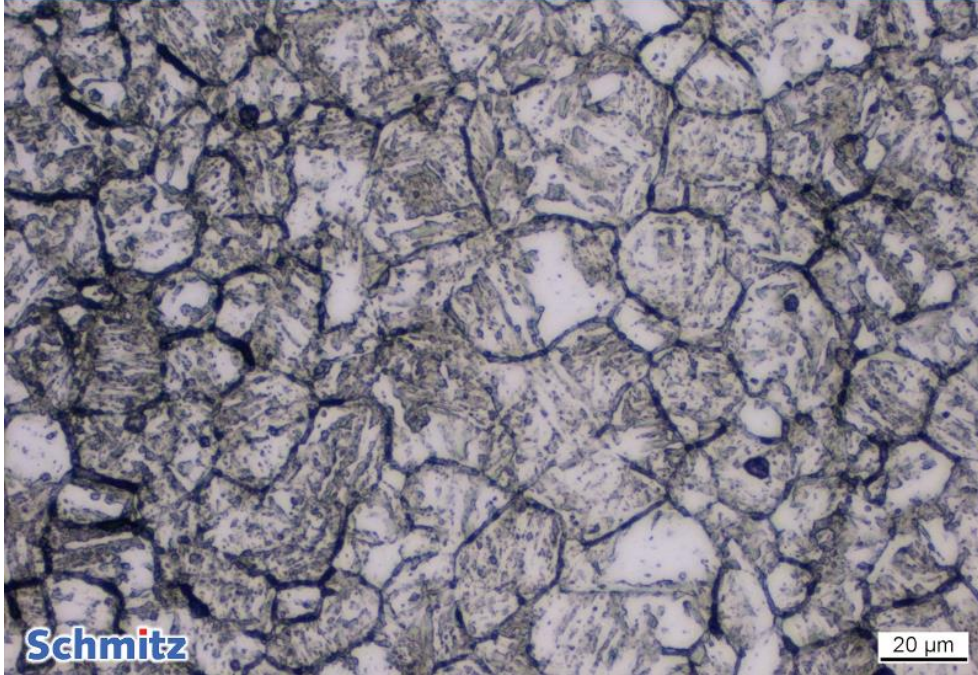


# Prior Austenite Grainboundaries etching reagent

## PAG QT<sup>2</sup> made by Schmitz

1.7077 | 36CrB4 +QT 10.9

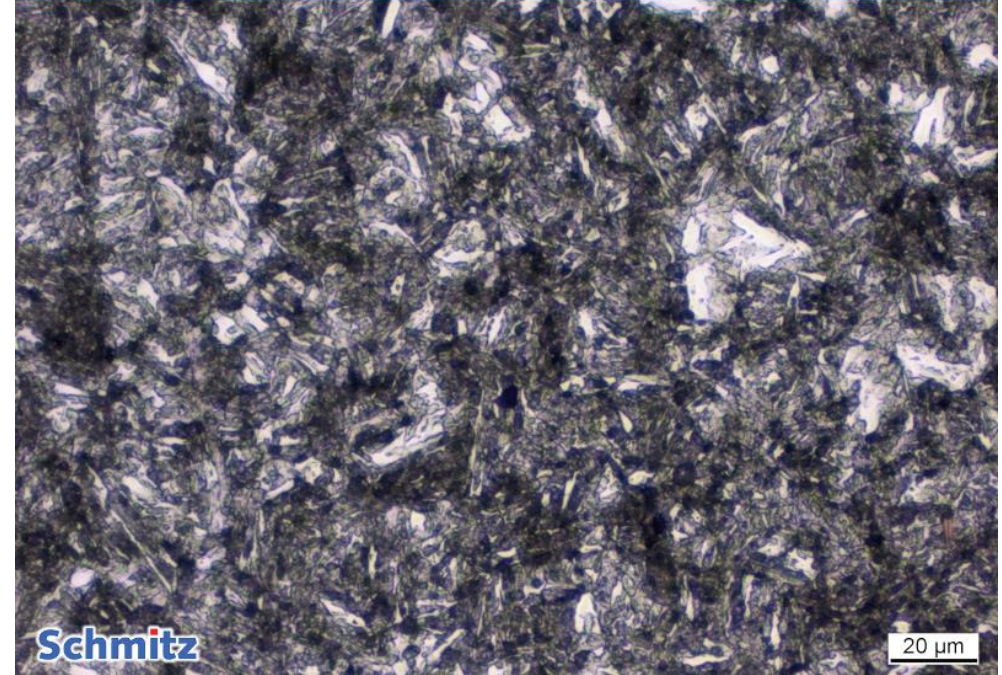
PAG QT<sup>2</sup> (c)



- 1.7077 | 36CrB4 +QT (10.9 screw)
- Time: 3+3+15+180 min+30s OPS
- Temperature: 22 °C | 72 °F

1.7077 | 36CrB4 +QT 12.9

PAG QT<sup>2</sup> (c)



- 1.7077 | 36CrB4 +QT (12.9 screw)
- Time: 3+3+15+180 min+30s OPS
- Temperature: 22 °C | 72°F

Quelle:

© Schmitz-Metallographie GmbH

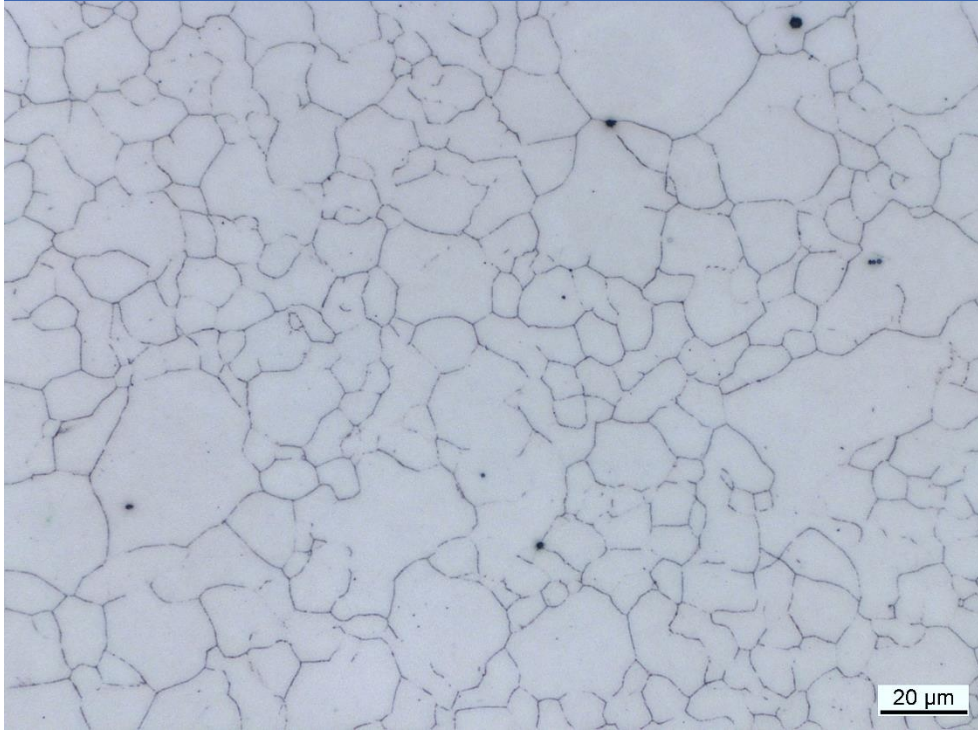


# Prior Austenite Grainboundaries etching reagent

**PAG QT<sup>2</sup>** made by Schmitz

1.7131 | 16MnCr5

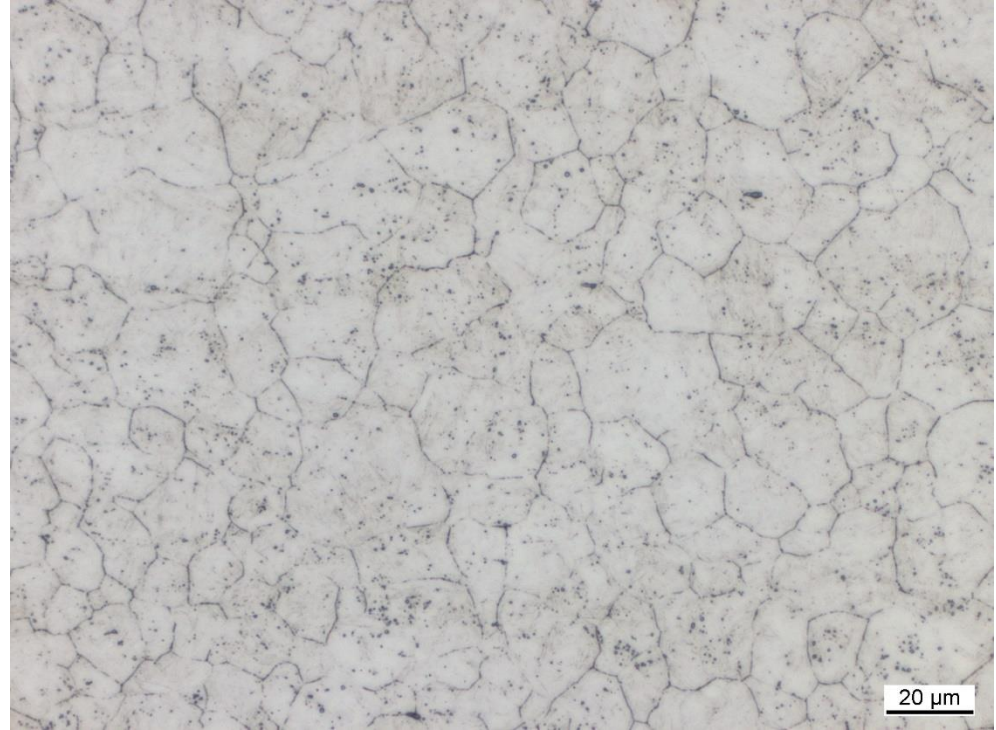
aufgekocht



■ Time: 2x 2 min

■ Temperature: 22 °C | 72 °F

1.7227 | 42CrMo4 induktionsgehärtet



■ Time: 16 min

■ Temperature: 22 °C | 72°F

Quelle:

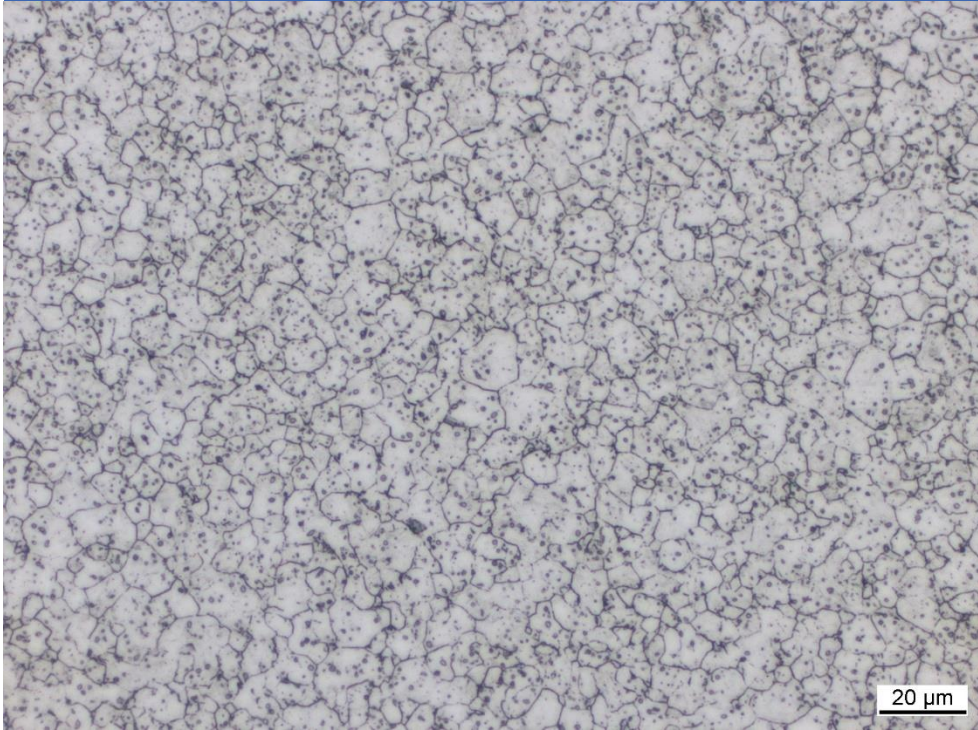
© Schmitz-Metallographie GmbH



# Prior Austenite Grainboundaries etching reagent

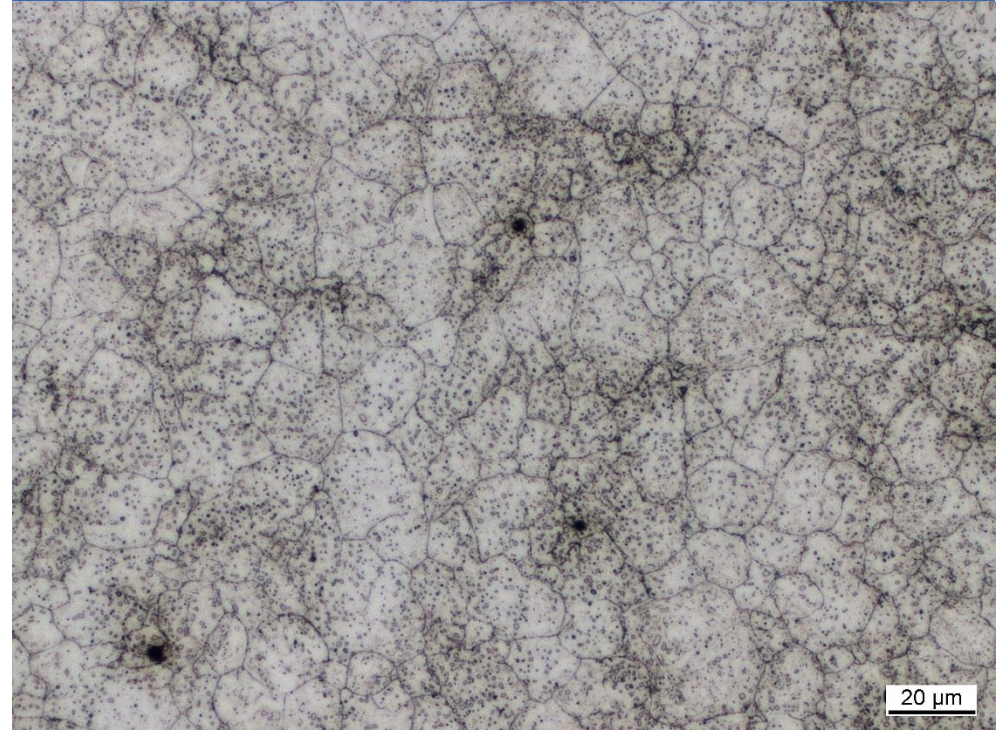
**PAG QT<sup>2</sup>** made by Schmitz

1.8159 | 51CrV4 +QO +T



- Time: 2x 5 min
- Temperature: 22 °C | 72 °F

1.2067 | 102Cr6 +QT



- Time: 3x 2 min
- Temperature: 22 °C | 72 °F

Quelle:

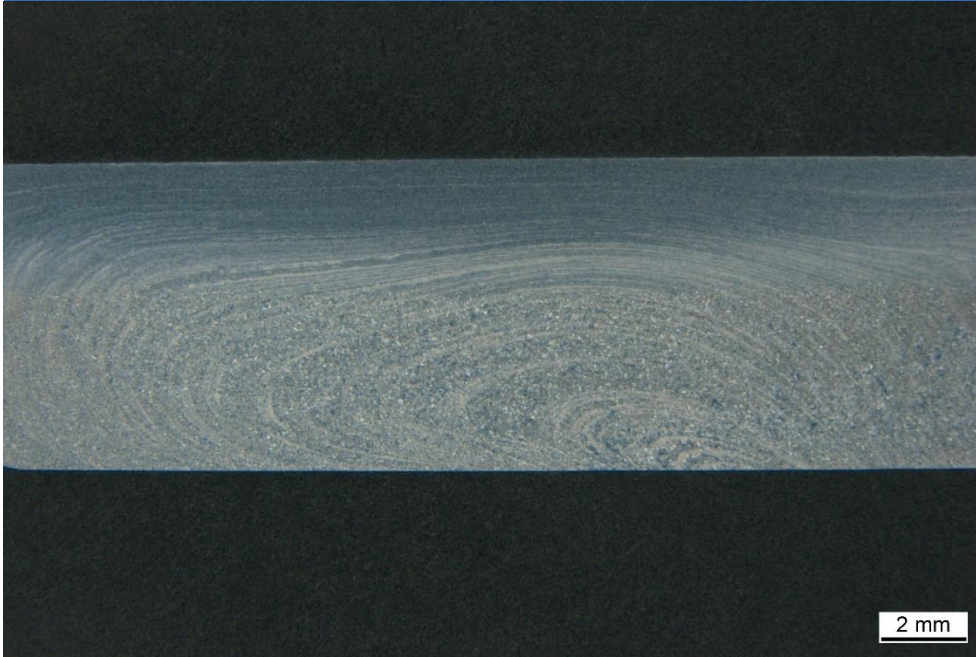
© Schmitz-Metallographie GmbH



# Prior Austenite Grainboundaries etching reagent

**PAG QT<sup>2</sup>** made by Schmitz

1.0503 | C45 induktionsgehärtet  
Faserverlauf



- Time: 3x 3 min
- Temperature: 22 °C | 72 °F

Nietverbindung ~1900 Faserverlauf



- Time: 3 min
- Temperature: 22 °C | 72 °F

Quelle:

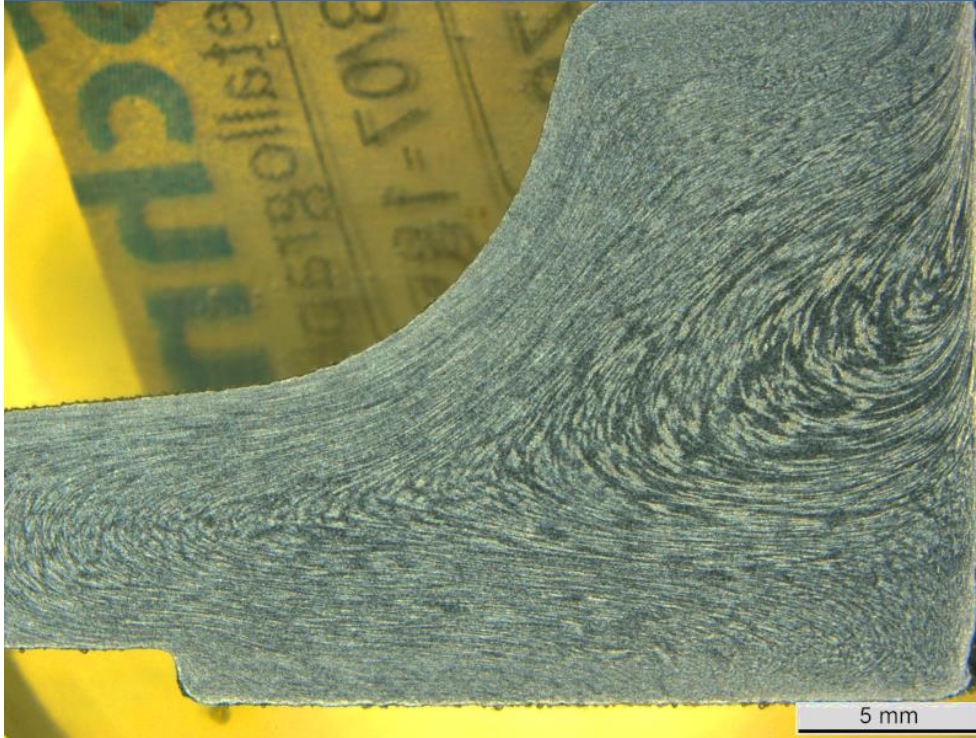
© Schmitz-Metallographie GmbH

# Prior Austenite Grainboundaries etching reagent

**PAG QT<sup>2</sup>** made by Schmitz

1.5528 | 22MnB5

Faserverlauf



■ Time: 1x 5 min

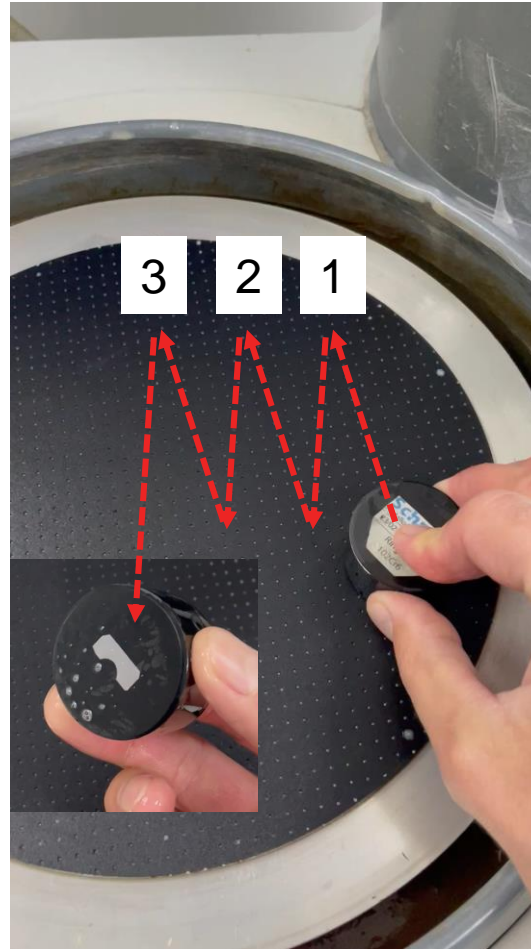
■ Temperature: 22 °C | 72 °F

■ Schmiedebauteil

Quelle:



# Ätztechnik



- 3 min Tauchätzung
- auf nicht rotierendem, nassem OPS Poliertuch Oxidhaut abwischen
- Wiederholung Ätzung und abwischen 2-3 mal
- fertig

Quelle:

© Schmitz-Metallographie GmbH



# Prior Austenite Grainboundaries etching reagent

**PAG QT<sup>2</sup>** made by Schmitz



- <https://metallographie.shop/PAG-QT-Aetzmittel-auf-ehemalige-Austenitkorngrenzen-an-un-und-niedrig-legierten-Staehlen-1-Liter>

Quelle:

© Schmitz-Metallographie GmbH

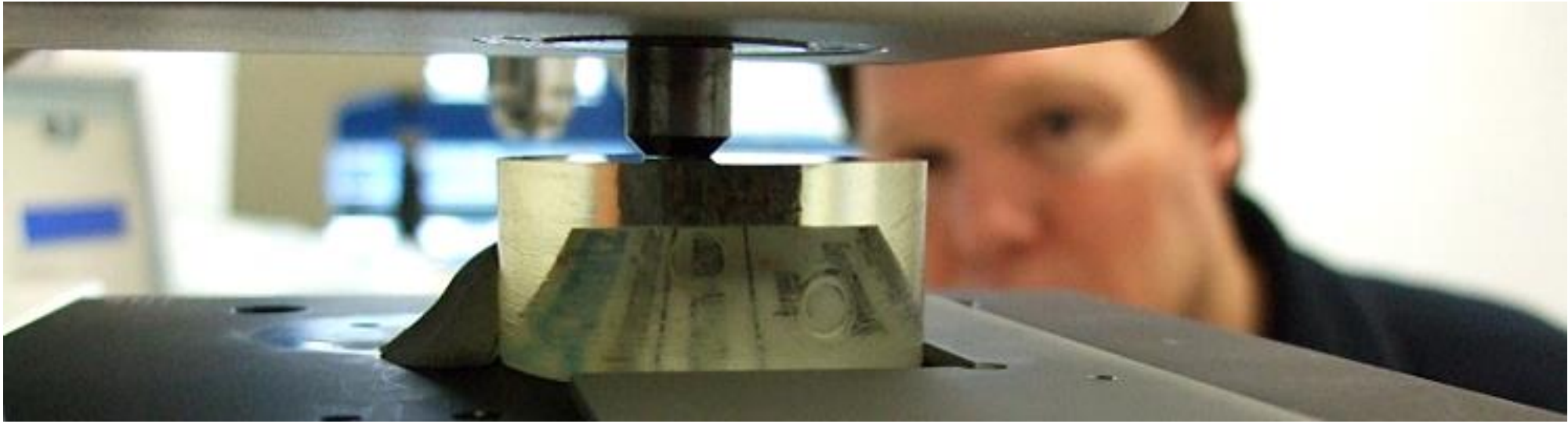
**Schmitz**  
Metallographie GmbH

Seite 9

# Contact

Schmitz-Metallographie GmbH

---



Schmitz-Metallographie GmbH  
Kaiserstraße 100  
52134 Herzogenrath / Germany  
Phone +49 2407 568296-0  
Fax +49 2407 568296-9  
[info@schmitz-metallographie.de](mailto:info@schmitz-metallographie.de)  
[www.schmitz-metallographie.de](http://www.schmitz-metallographie.de)

Source:

© Schmitz-Metallographie GmbH

**Schmitz**  
Metallographie GmbH

Seite 10